

TROUBLE

Shuffle

LIVE

COLUMBUS, OH

HOW WE DO IT

OUR MISSION

Red Wine and Blue Team Ohio provides an inviting and actionable pathway to political literacy and civic engagement about common-sense issues facing suburban women. We build community through approachable content, friend-to-friend organizing, and personal storytelling.



SOCIAL MEDIA

#RedWineAndBlue and

#TroubleHuddleOHIO

when posting on social media about today!!

WHEN THEY GO LOW,
***WE GO
LOCAL***

AGENDA

- 10:00** **Welcome, Introductions**
- 11:00** **Group Picture**
- 11:20** **Strategy & Priorities**
- Noon** **RWB App and Rally!**
- 12:30** **Lunch with New Friends**
- 1:20** **Partner Panel**
- 2:20** **Break**
- 2:30** **How to Capture It All**
- 3:00** **TroubleNation Resources & Their Plans**
- 3:45** **Commitment, Wrap Up and Closing**

MEET TEAM OHIO

email us at
OHIO@redwine.blue



LAURA MULLEN
(SHE/HER)
PROGRAM DIRECTOR
laura@redwine.blue



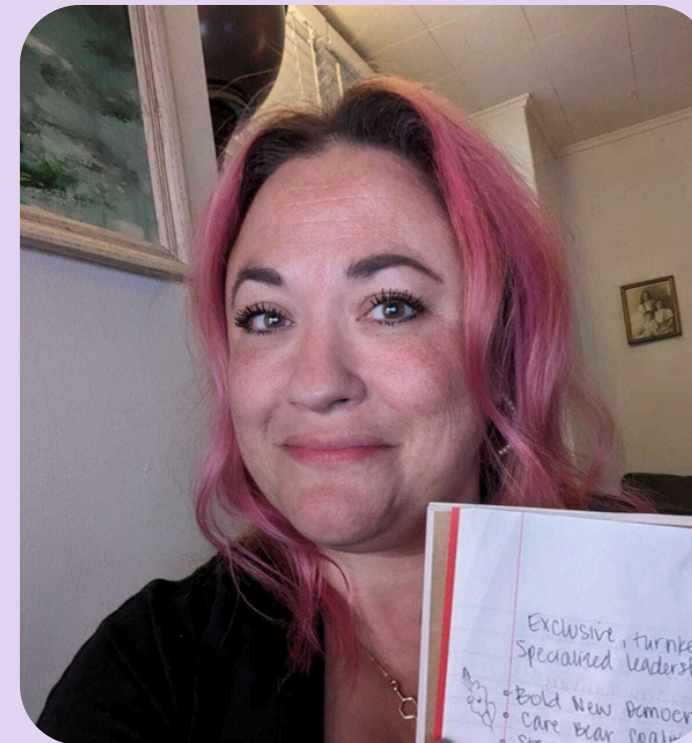
ARIE GOODMAN
(SHE/HER)
DEPUTY DIRECTOR
arie@redwine.blue



AMY DIDION
(SHE/HER)
NORTHERN OHIO
amydidion@redwine.blue



ROBYN FORNEY
(SHE/HER)
CLEVELAND AREA
robyn@redwine.blue



DALE MARIE PONTZ
(SHE/HER)
CINCINNATI AREA
dalemarie@redwine.blue



BRIDGET RUETER
(SHE/HER)
CINCINNATI AREA
bridget@redwine.blue

WELCOME OUR RWVB GUESTS



JULIE COLLINS
(SHE/HER)
NATIONAL ORGANIZER



JULIE WOMACK
(SHE/HER)
HEAD OF ORGANIZING



MISSY MCGINNES
(SHE/HER)
DISTRIBUTED ORGANIZING
DIRECTOR



SHAYLA DUNN
(SHE/HER)
SOCIAL MEDIA MANAGER

COMMUNITY NORMS

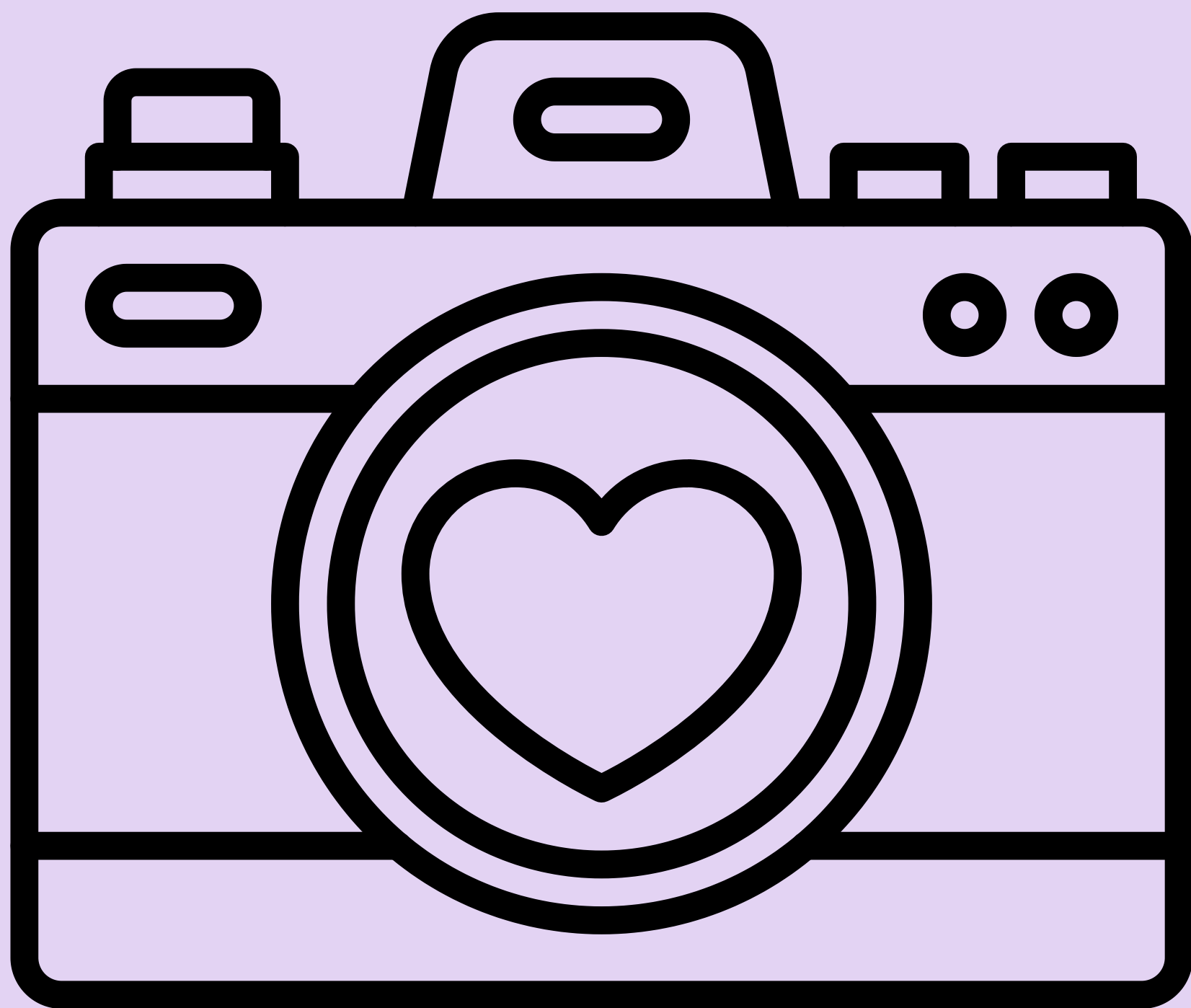
- Take care of your needs
- Be considerate of the space you take up
- Assume best intentions
- Understand that this space cannot hold everything
- Commit to this not being the last action you take

INTRODUCTIONS

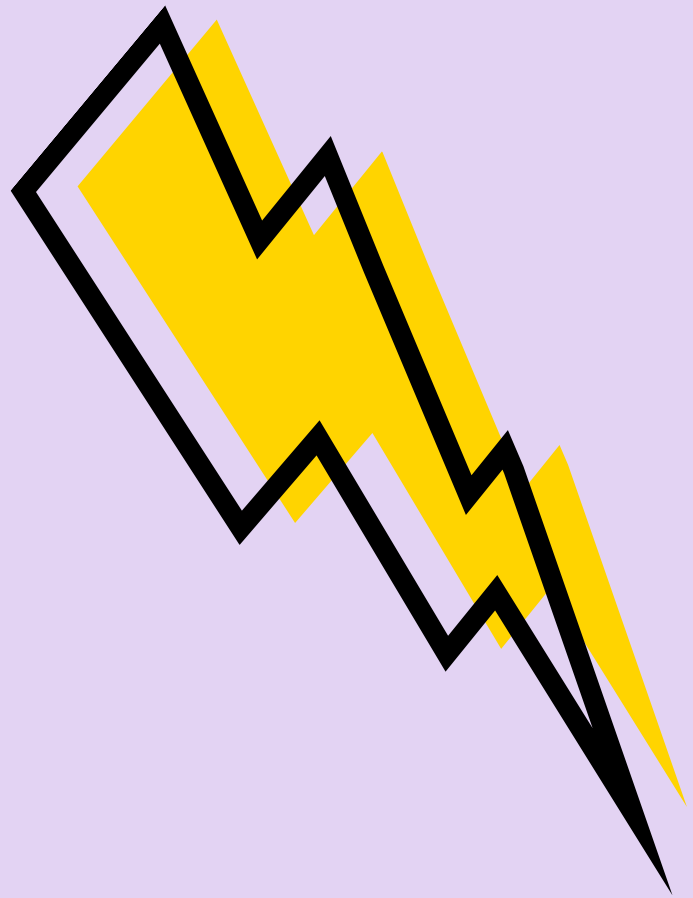
- **your name & pronouns (optional)**
- **where you are from in Ohio**
- **one thing you hope to gain by joining us today**
-- OR --
- **what is a topic you could teach a lesson on with no preparation?**

AGENDA

- 10:00** Welcome, Introductions
- 11:00** **Group Picture**
- 11:20** Strategy & Priorities
- Noon** RWB App and Rally!
- 12:30** Lunch with New Friends
- 1:20** Partner Panel
- 2:20** Break
- 2:30** How to Capture It All
- 3:00** TroubleNation Resources & Their Plans
- 3:45** Commitment, Wrap Up and Closing

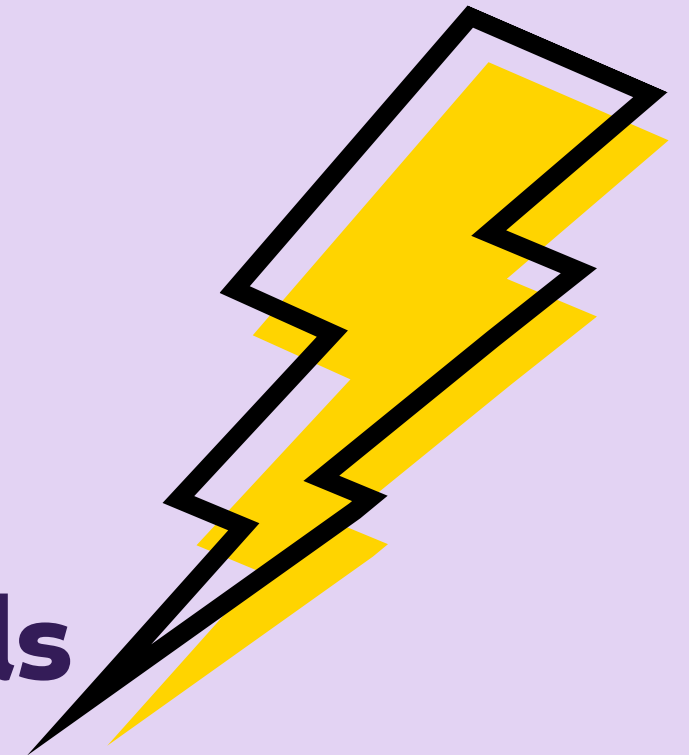


LIGHTNING BOLTS



Inspiration strikes

- Use your notebook
- Use the post-its on the tables
- Use each other as sounding boards



AGENDA

- 10:00** Welcome, Introductions
- 11:00** Group Picture
- 11:20** **Strategy & Priorities**
- Noon** RWB App and Rally!
- 12:30** Lunch with New Friends
- 1:20** Partner Panel
- 2:20** Break
- 2:30** How to Capture It All
- 3:00** TroubleNation Resources & Their Plans
- 3:45** Commitment, Wrap Up and Closing

STRATEGY BACKGROUND



8000 Races Across Ohio

- School Board races
- County commissions
- Municipal - city and town councils

★ ★ ★
OHIO
Early Voting Hours

OCTOBER 7-10:	8:00 A.M. – 5:00 P.M.
OCTOBER 14-17:	8:00 A.M. – 5:00 P.M.
No VOTING ON MONDAY THE 13TH – <u>INDIGENOUS PEOPLES' DAY</u>	
OCTOBER 20-24:	8:00 A.M. – 5:00 P.M.
OCTOBER 27:	7:30 A.M. – 7:30 P.M.
OCTOBER 28:	7:30 A.M. – 8:30 P.M.
OCTOBER 29-31:	7:30 A.M. – 7:30 P.M.
FINAL WEEKEND TO EARLY VOTE	
NOVEMBER 1:	8:00 A.M. – 4:00 P.M.
NOVEMBER 2:	1:00 P.M. – 5:00 P.M.
No VOTING ON MONDAY NOV 3RD	

Red Wine & Blue

★ ★ ★
OHIO
Deadline to
Register to Vote
TO BE ELIGIBLE TO VOTE IN NOVEMBER

October 6th

Red Wine & Blue

★ ★ ★
Absentee Ballot
Requests

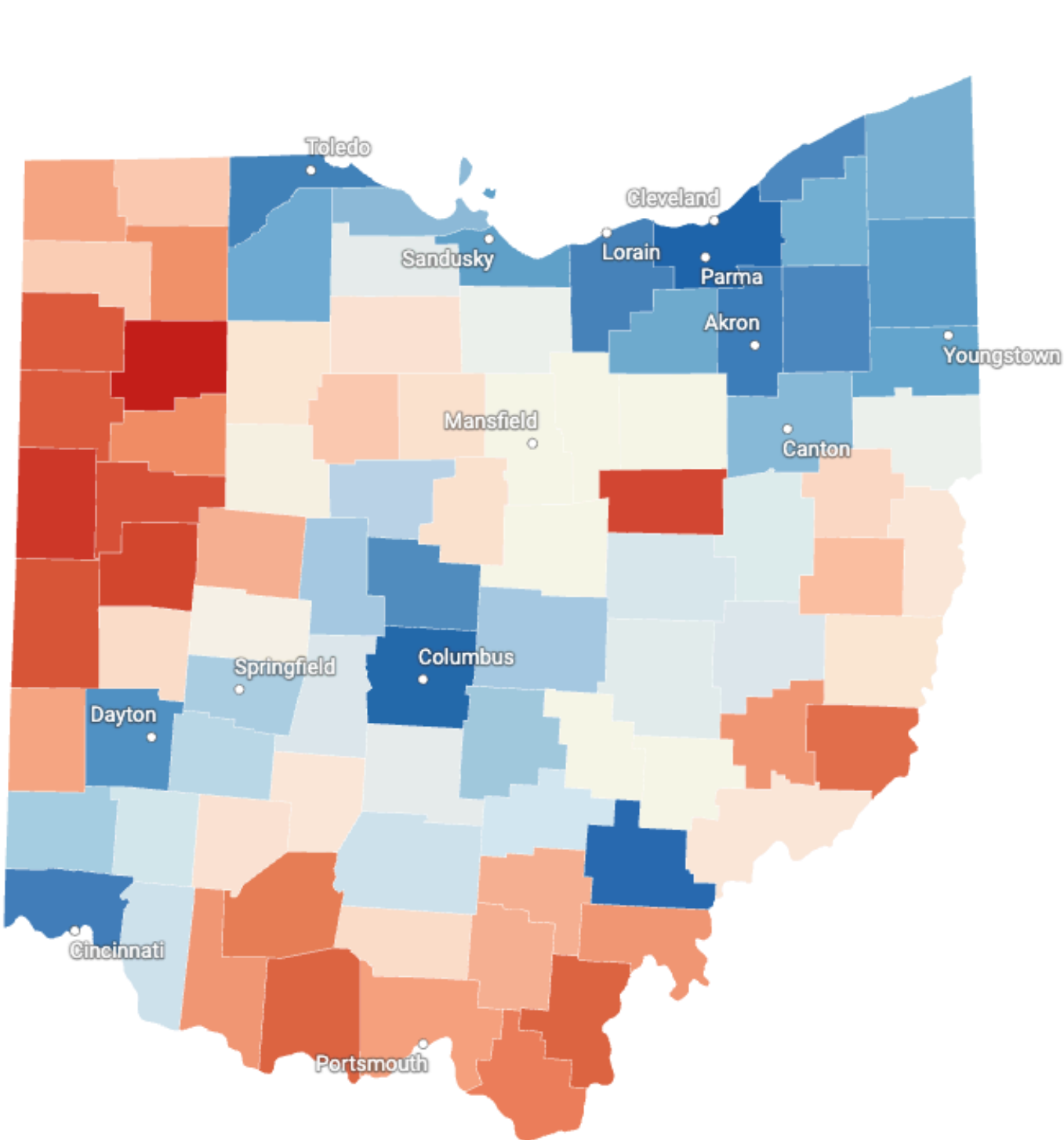
NOW – OCTOBER 28

 **VOTE**

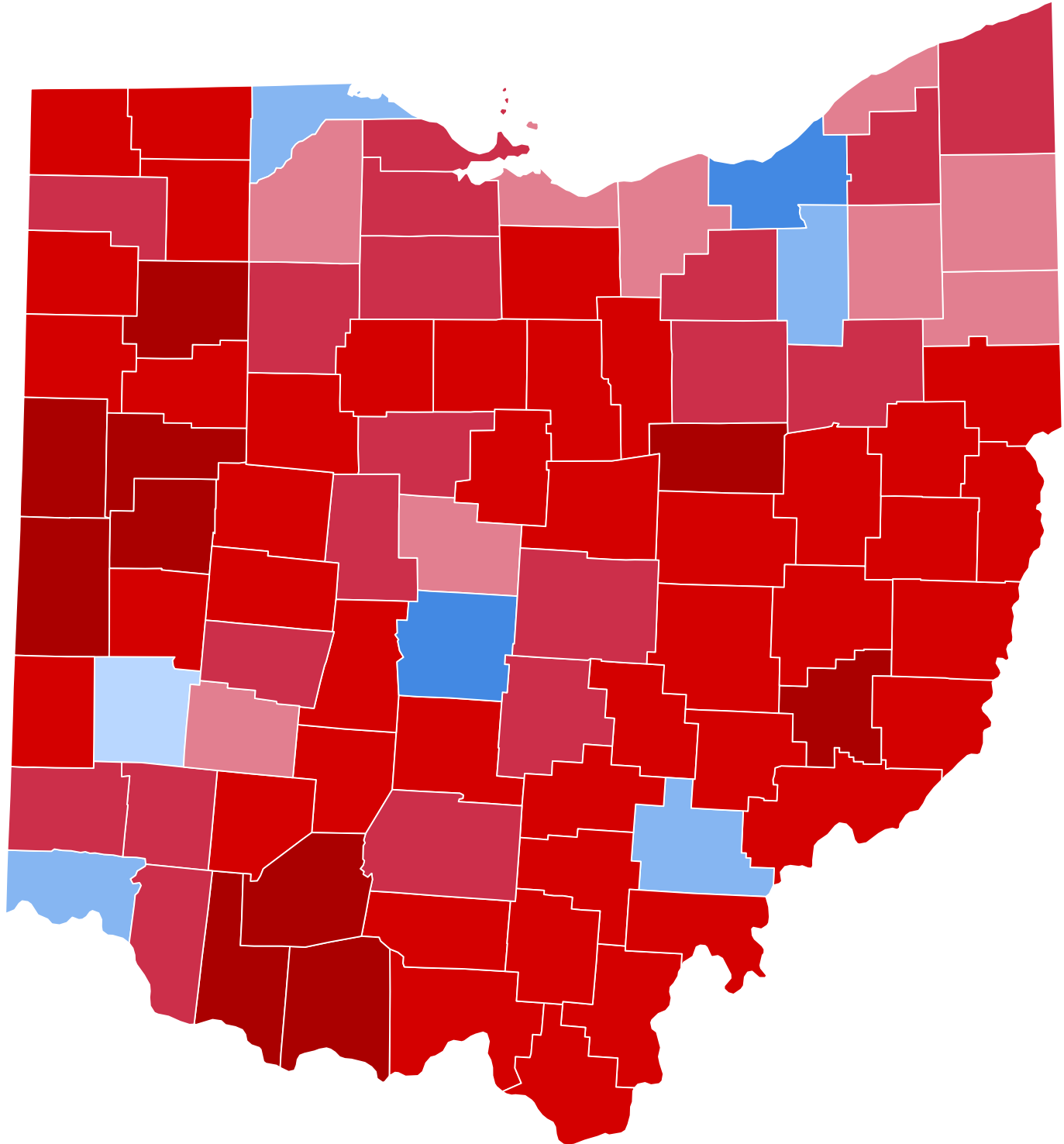
SUBMIT YOUR REQUEST NOW!
THE BALLOT WILL BE MAILED
AFTER OCTOBER 7TH

Red Wine & Blue

Partisan Lean in Ohio



2023 REPRO WIN



2024 CYCLE

Ohio House Races - 2024

Northeast

HELD

District 16
District 23
District 34
District 43
District 53

Ohio House Districts 2024-2032

(as adopted 9/29/2023)



Central

HELD

District 6
District 11

FLIPPED

District 10

Southwest

HELD

District 25
District 26
District 27
District 28

SUMMARY

HELD

11 House Districts
FLIPPED

1 House District
*** No Supermajority**

Ohio Senate Races - 2024

Northeast

HELD
District 28

Central

FLIPPED

District 16

Southwest

FLIPPED
District 16



SUMMARY

HELD
1 Senate District
FLIPPED
2 Senate Districts

Whatever happened to the tie results in Madison Local Schools' levy vote?

 **Bebe Hodges**
Cincinnati Enquirer

Updated June 10, 2025, 5:57 p.m. ET



[Show gallery info](#) ▾

Did you wonder what happened to the [unusual tie vote](#) from Ohio's primary election in May?

The [Madison Local School District's](#) proposed tax levy, which early unofficial results showed voters were split 50-50 on, failed, according to [official election results](#) from the Butler County Board of Elections released on May 22.

The levy failed 50.2% to 49.8% with 626 votes against the levy and 621 votes for the levy.

Unofficial election results released shortly after polls closed on May 6 showed the levy received 620 votes in favor and 620 votes against. But the unofficial count did not include eligible provisional ballots and absentee ballots in the vote total. Officials counted these ballots in the following weeks and certified the results.

Every Vote Counts!

21 Brooklyn CSD Bond Issue (Vote for 1)
1831 ballots (0 over voted ballots, 0 overvotes, 57 undervotes), 7408 registered voters, turnout 24.72%

For the Bond Issue	891	50.23%
Against the Bond Issue	883	49.77%
Total	1774	100.00%
Overvotes	0	
Undervotes	57	

**WON
+7 Votes**

wkyc.com

3 wkyc studios

f

Avon Lake City Schools' bond issue officially passes following recount

The measure will raise \$88.1 million for construction of a new school for grades 5-8, as well as repairs to existing elementary school buildings.

Author: Tyler Carey, Anna Meyer
Published: 8:13 AM EDT May 30, 2025
Updated: 8:13 AM EDT May 30, 2025

ELYRIA, Ohio — More than three weeks after Election Day, the [Avon Lake City School District's \\$88.1 million bond issue](#) has officially been approved.

Issue 16 passed at the ballot box on May 6, but by just 20 votes — a margin of only 0.28%.

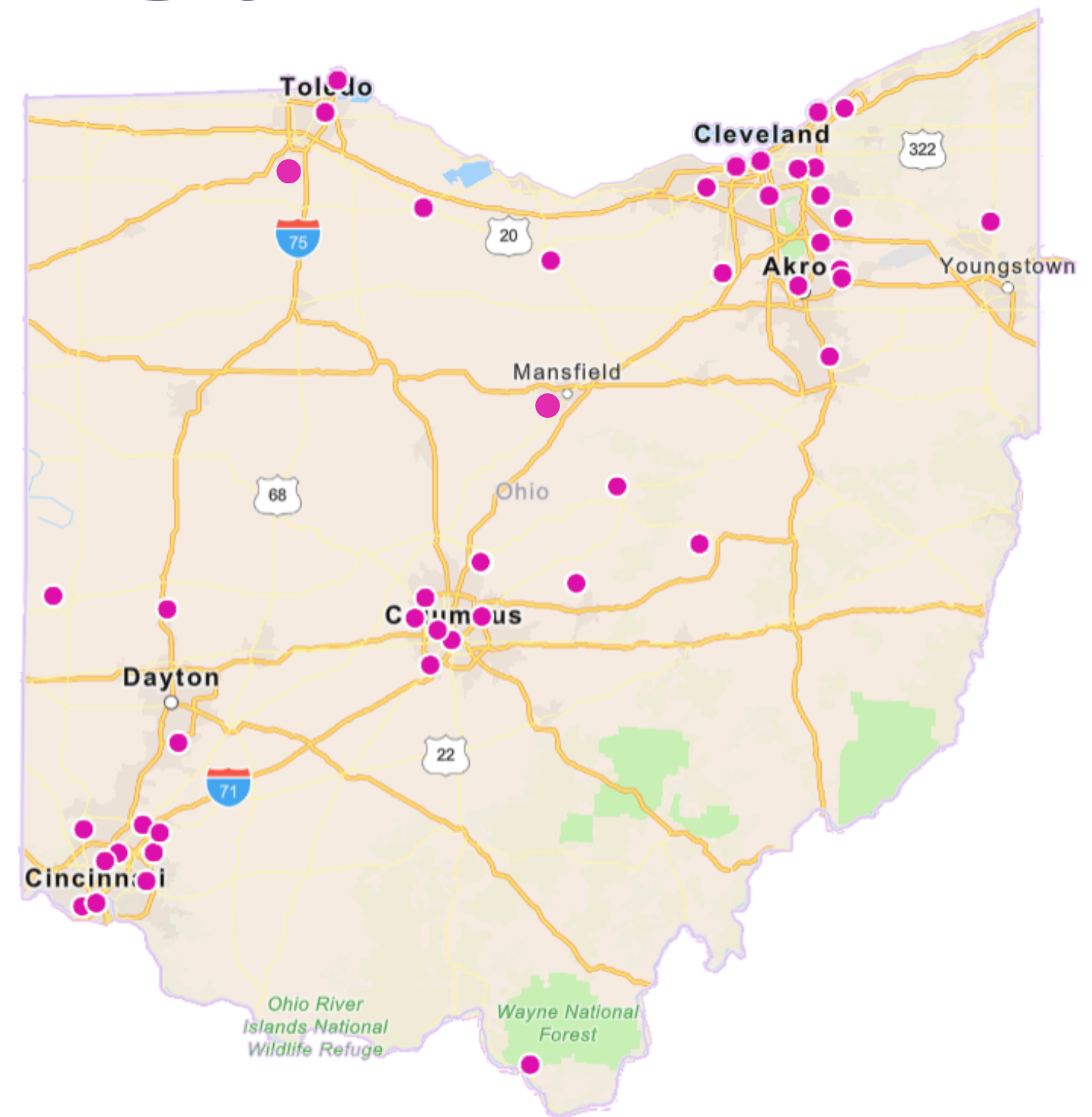
Under Ohio law, the result was subject to an automatic recount. According to the Lorain County Board of Elections, Issue 16 passed, 3,531 to 3,511.

**WON
+20 Votes**

**LOST
-5 Votes**

WHEN THEY GO LOW,
WE GO LOCAL

Strategy



Challenges **IN OHIO**

- ★ Gerrymandered
- ★ Legislative Redistricting
- ★ Hail storm of TERRIBLE Legislative Actions
- ★ Vote Taken for Granted
- ★ Disillusionment
- ★ State Budget Impact
- ★ Unresponsive Representatives
- ★ Federal Budget impact

Summer *of* ACTION

#RWBSummerOfAction

Red
Wine & Blue

AGENDA

- 10:00** Welcome, Introductions
- 11:00** Group Picture
- 11:20** Strategy & Priorities
- Noon** **RWB App and Rally!**
- 12:30** Lunch with New Friends
- 1:20** Partner Panel
- 2:20** Break
- 2:30** How to Capture It All
- 3:00** TroubleNation Resources & Their Plans
- 3:45** Commitment, Wrap Up and Closing

RELATIONAL ORGANIZING, AKA... **FRIEND TO FRIEND ORGANIZING**

The simple, proven concept that
people talking to their friends and
family is more effective than strangers
talking to strangers



WHO ARE WE TRYING TO REACH?

- **Like-minded friends** - Yes, you need to talk to them! They know who to vote for President or Governor, but they still need info about local races!
- **Moderate/non-political friends** - These are the friends who don't pay a lot of attention to politics but will vote and take your advice on candidates. This may include people that you need to persuade on the issues and educate about why voting is important.

THE MESSENGER MATTERS!

WHO DO YOU TRUST?



Which sources do Americans trust for accurate information about elections?

How much do you trust the following to report accurate information about elections? (% of U.S. adult citizens)





RALLY

TOGETHER



HOW WE DO IT

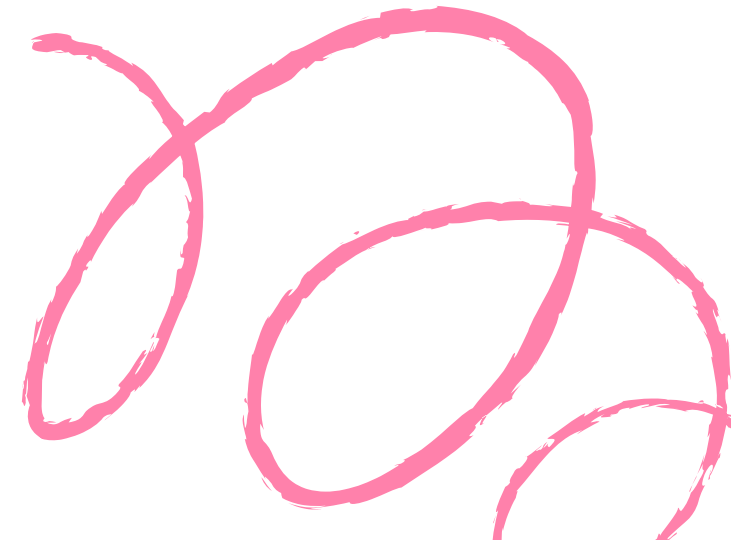
RALLY TOGETHER

Have you used the Rally tool before?

- Rally is RWB's relational organizing tool
 - Helps YOU talk to your friends and family about issues that matter to them
 - Enables RWB to quantify the impact of our relational organizing efforts
-
- You choose which of your contacts to add
 - Your friends are matched to the voter file
 - You answer a few questions about your friend
 - RWB provides customized suggestions and reminders of topics to discuss with your friends



Join our Rally Campaign
<https://go.rally.win/rwb-oh>



WE NEED YOU!

MAP YOUR *Contacts*

Who can you talk to about issues, candidates and voting? Keep building your list and increasing your impact!

Family Members to Contact

1. _____
2. _____
3. _____
4. _____
5. _____

Who is on your holiday card list/Who would you invite to a milestone celebration

1. _____
2. _____
3. _____
4. _____
5. _____

People who likely agree with you but don't talk politics or are tuned out

1. _____
2. _____
3. _____
4. _____
5. _____

List Your Friends (besties, neighbors, your group chat and work buddies)

1. _____
2. _____
3. _____
4. _____
5. _____

Community Groups (mom groups, book clubs, faith institutions, kids' activities, PTA/PTO)

1. _____
2. _____
3. _____
4. _____
5. _____

Who are the last 10 people you texted/called? Who are the last 20 people who engaged on your social media?

1. _____
2. _____
3. _____
4. _____
5. _____

Think About Where You Go Often:

- ☒ Any recurring appointment
- ☒ Grocery store
- ☒ Preschool or school
- ☒ Hair or nail salon
- ☒ Gym



**RWB
Events**

redwine.blue/events



**Troublemaker
Resources**

go.redwine.blue/resources



**Rally Your
Squad**

redwine.blue/rallyyoursquad



WE NEED

YOU!

- Rally goals for this fall are AGGRESSIVE - that's how we make a difference!
- **We have a goal to TRIPLE the number of Rally USERS and more than DOUBLE the number of CONTACTS in Rally!**
- What works for you with Rally?
- What would you like to see in Rally?
- How are you able to convince people to use Rally?
- Rally on the Road!

BRING YOUR FRIENDS TO THE PARTY

HELP US RALLY **TOGETHER!**

Want to host a Rally
Together gathering or
form your own team?



*Red
Wine & Blue*

There's an app for that!

We're excited to share the new RWB app!

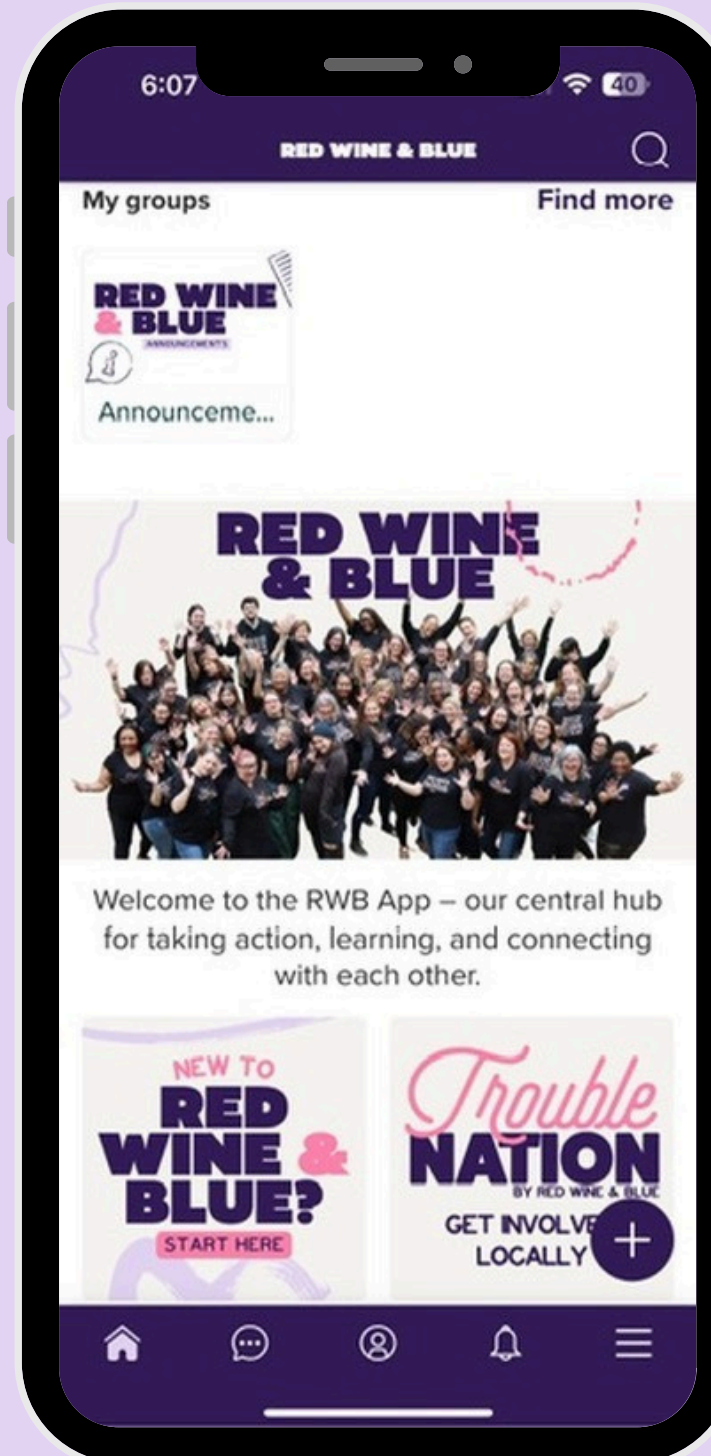
It's got everything you need and is super easy to use.



Today, we going to walk through getting familiarized with the home screen.



A Tour of the Home Screen

- My Groups - Where you will find all the community chat groups in the app.
- Photo & Welcome Message - Just to say Hello!

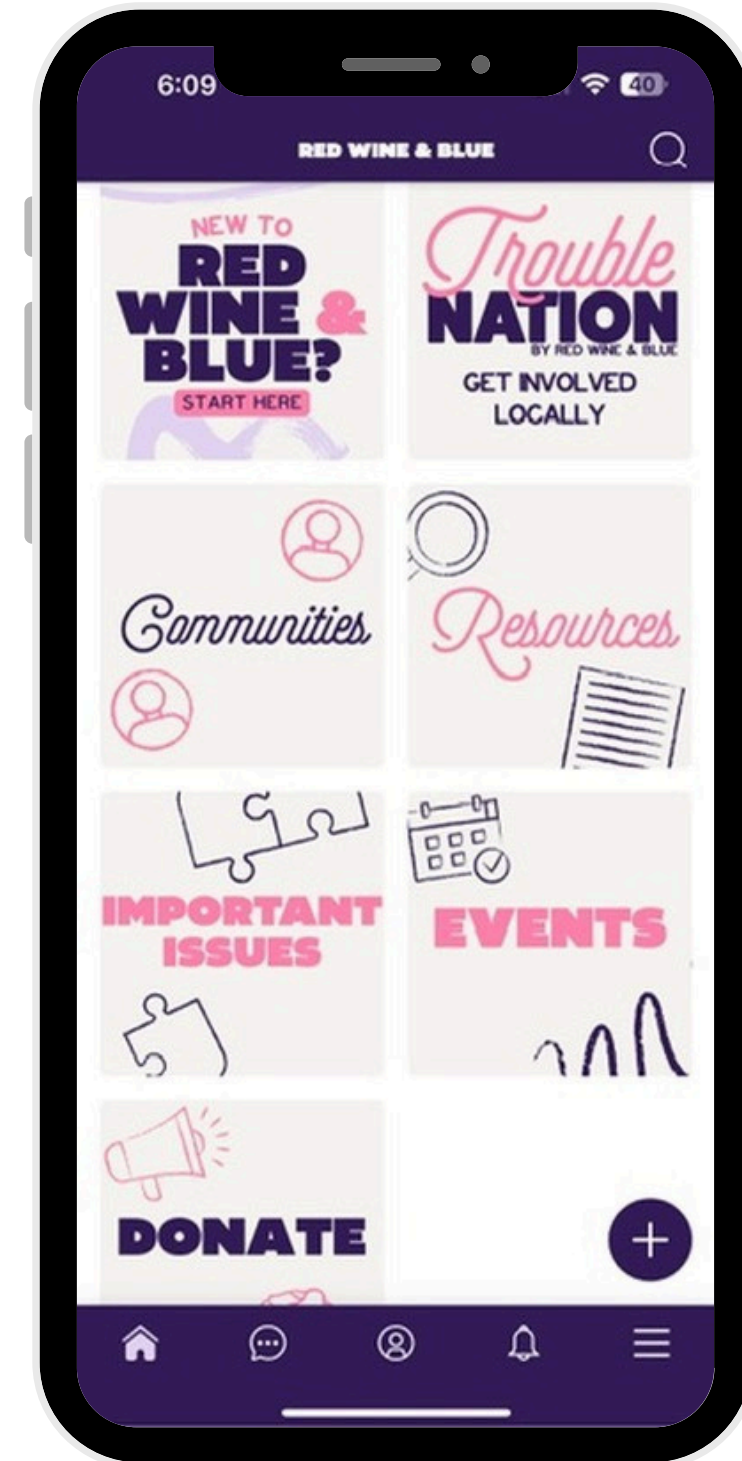


- The  in the upper right corner opens the Search field.
- The  in the lower right corner of the screen opens the window to create a new post.

The Home Screen (cont'd)

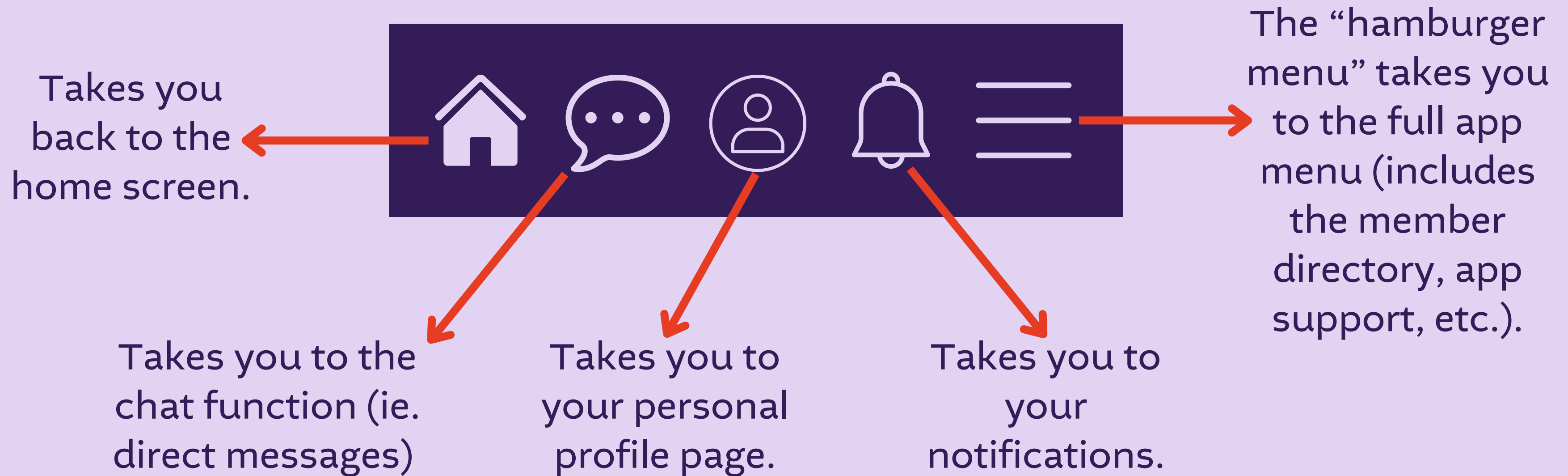
The content in the lower half of the home screen is organized in large square buttons or “tiles.”

- New to Red Wine & Blue - Everything you need to get started
- Your state
- TroubleNation
- Communities
- Resources
- Important Issues
- Events
- Donate



The Home Screen (cont'd)

At the bottom of the screen, you will see a tool bar:



TroubleNation and the RWB App

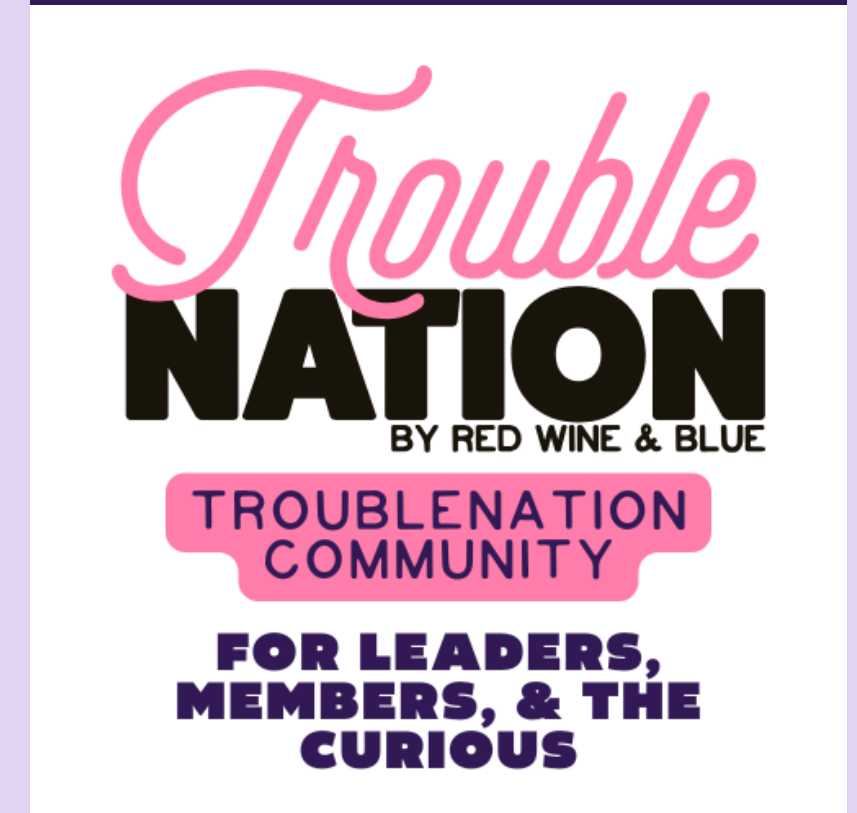
- **The RWB App does not replace your TroubleNation group page**
 - Suggest that your members “follow” you; that way they will be notified when you post on the app. This is one way to stay in touch with your members.
- TroubleNation leaders will receive a tag; this can be used to find other leaders with whom to connect.
- From the RWB App, you’ll be able to access the content on the TroubleNation resources page.
- Potential group members can also access the TroubleNation map from the RWB App.

TroubleNation Communities

Optional (but recommended!) communities:

- **TroubleNation Leaders Community** – exclusively for TroubleNation group leaders.
- **TroubleNation Community** – for all TroubleNation members and leaders, as well as anyone who'd like to learn more about TroubleNation before starting or joining a TroubleNation group.

Important: Use your **first and last names** in your username so we (and your fellow leaders!) know who we're chatting with.

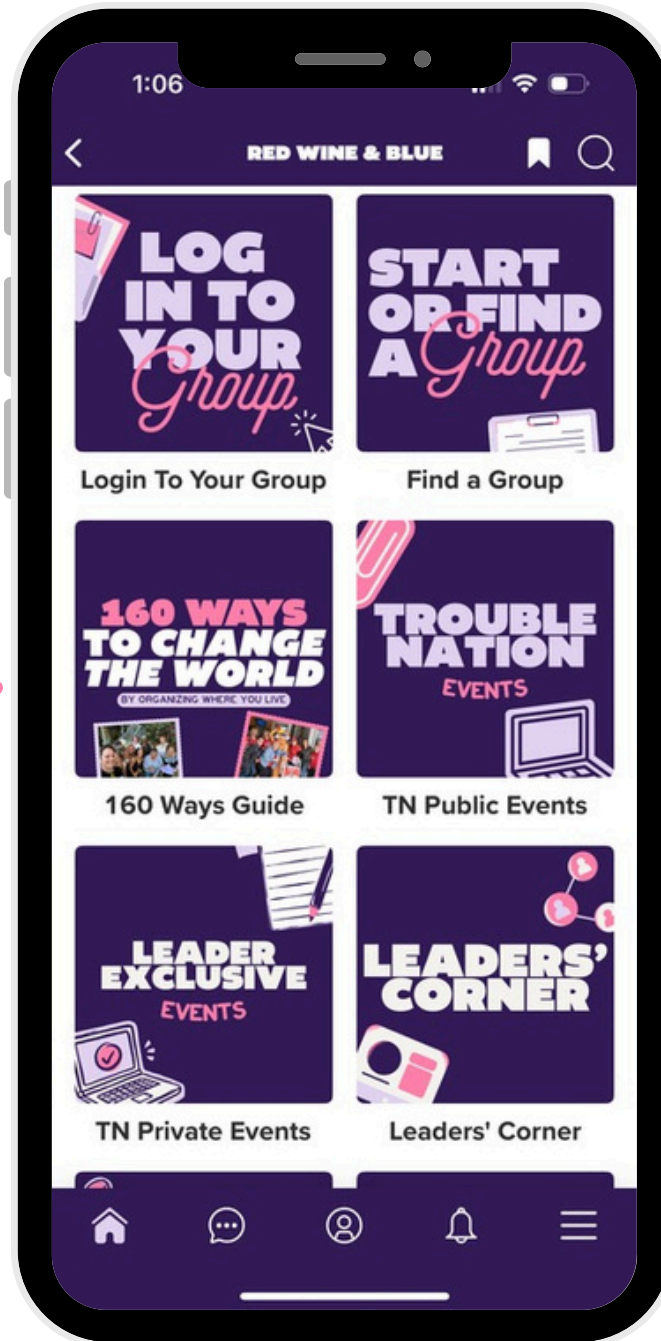


TroubleNation on the App

Ideas for
getting
involved



Launch
sequence,
Happy Hours,
TroubleNation
University



New Group
Orientation



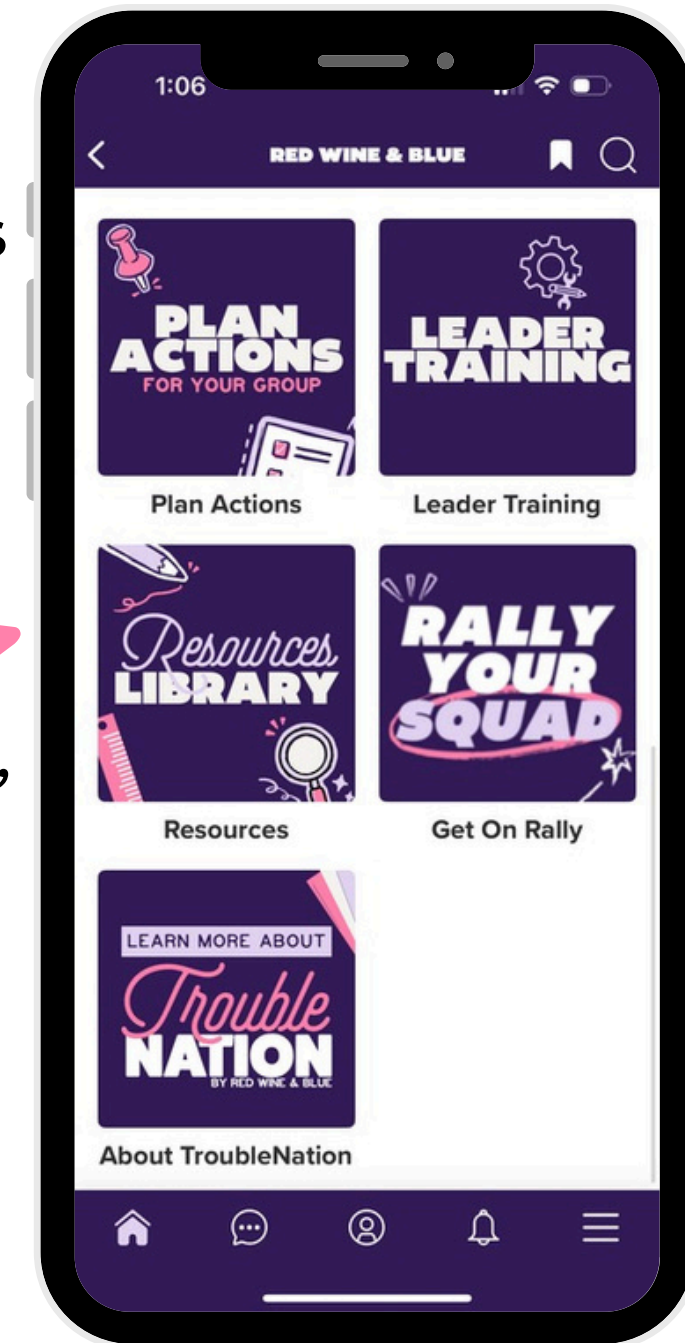
Basic info for
running your
group; Group
services



Ideas for
group actions



Slideshows,
printables,
videos

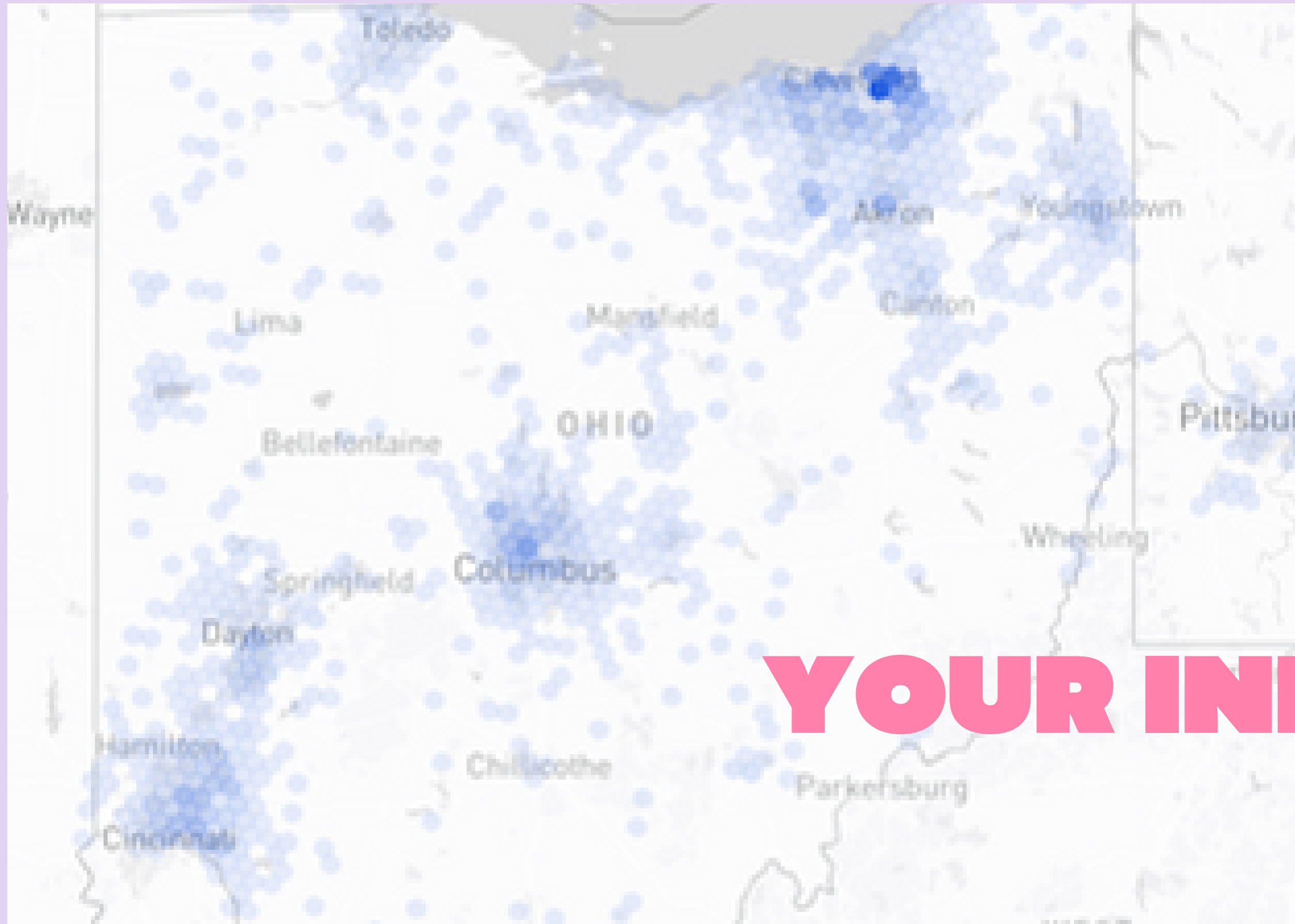


Links to
training
playlists



Friend-to-
friend
organizing

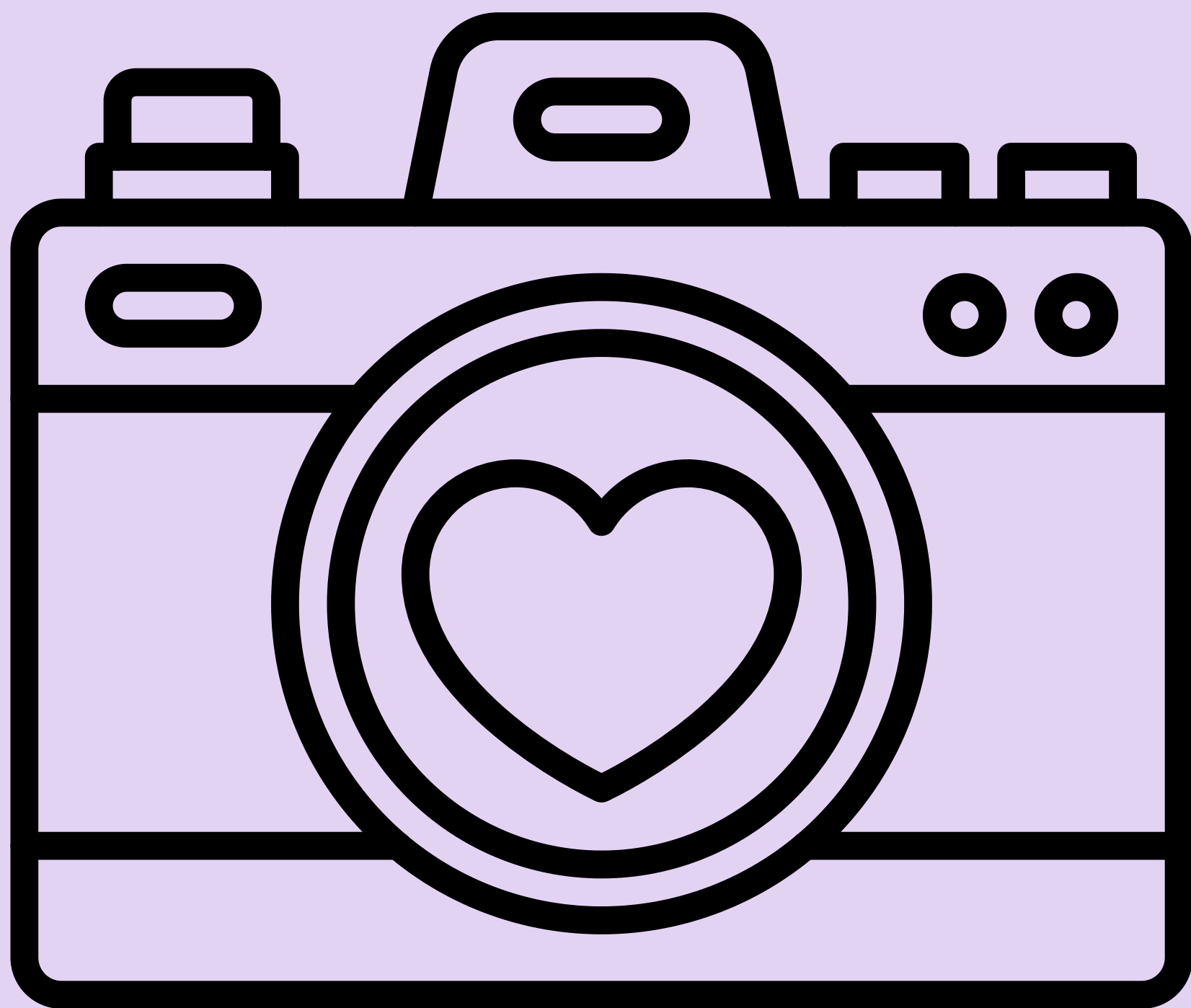




**YOUR INFLUENCE IS
HUGE**

AGENDA

- 10:00** Welcome, Introductions
- 11:00** Group Picture
- 11:20** Strategy & Priorities
- Noon** RWB App and Rally!
- 12:30** Lunch with New Friends
- 1:20** Partner Panel
- 2:20** Break
- 2:30** How to Capture It All
- 3:00** TroubleNation Resources & Their Plans
- 3:45** Commitment, Wrap Up and Closing



AGENDA

- 10:00** Welcome, Introductions
- 11:00** Group Picture
- 11:20** Strategy & Priorities
- Noon** RWB App and Rally!
- 12:30** Lunch with New Friends
- 1:20** **Partner Panel**
- 2:20** Break
- 2:30** How to Capture It All
- 3:00** TroubleNation Resources & Their Plans
- 3:45** Commitment, Wrap Up and Closing

PARTNER PANEL



MARIA BRUNO
(SHE/HER)
EXECUTIVE DIRECTOR
OHIOANS AGAINST EXTREMISM
maria@ohagainstextremism.org



DR CHRISTINA COLLINS
(SHE/HER)
EXECUTIVE DIRECTOR
HONESTY FOR OHIO EDUCATION
ccollins@honestyforohioeducation.org



RACHEL COYLE
(SHE/HER)
POLICY DIRECTOR
OHIOANS AGAINST EXTREMISM
COYLE@STATEACTIONINITIATIVE.COM

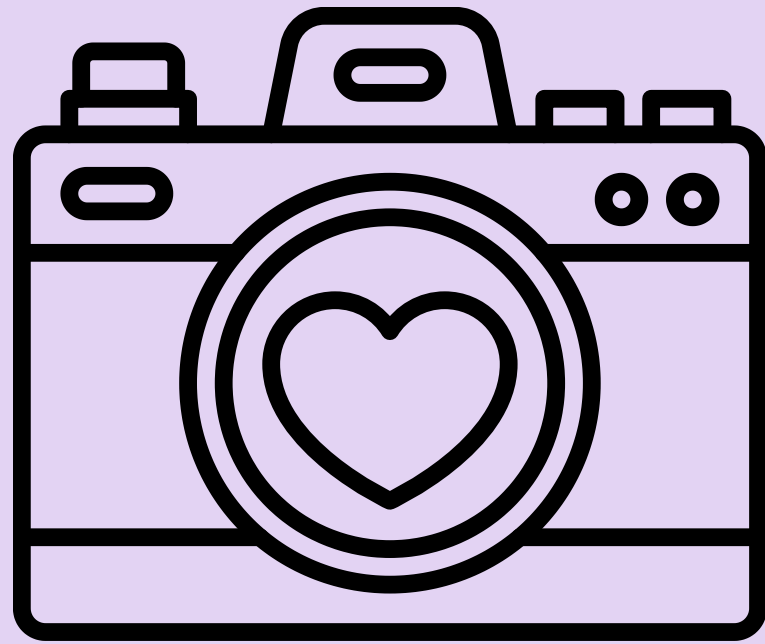


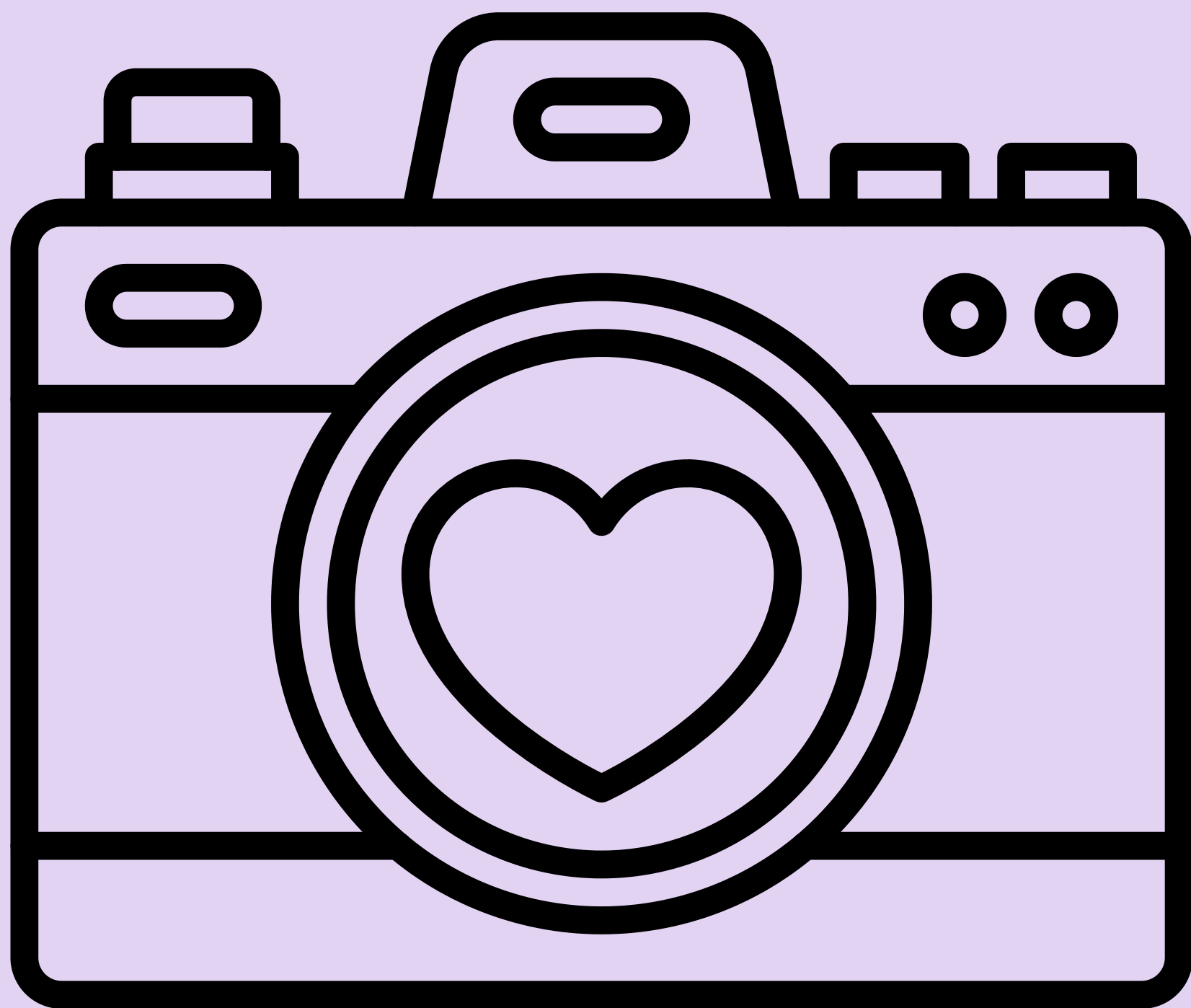
KEN SCHNECK
(HE/HIM)
EDITOR OF THE BUCKEYE FLAME
TENURED PROFESSOR
BALDWIN WALLACE UNIVERSITY
editor@thebuckeyeflame.com

AGENDA

- 10:00** Welcome, Introductions
- 11:00** Group Picture
- 11:20** Strategy & Priorities
- Noon** RWB App and Rally!
- 12:30** Lunch with New Friends
- 1:20** Partner Panel
- 2:20** Break
- 2:30** **How to Capture It All**
- 3:00** TroubleNation Resources & Their Plans
- 3:45** Commitment, Wrap Up and Closing

HOW TO CAPTURE IT ALL





AGENDA

- 10:00** Welcome, Introductions
- 11:00** Group Picture
- 11:20** Strategy & Priorities
- Noon** RWB App and Rally!
- 12:30** Lunch with New Friends
- 1:20** Partner Panel
- 2:20** Break
- 2:30** How to Capture It All
- 3:00** **TroubleNation Resources & Their Plans**
- 3:45** Commitment, Wrap Up and Closing

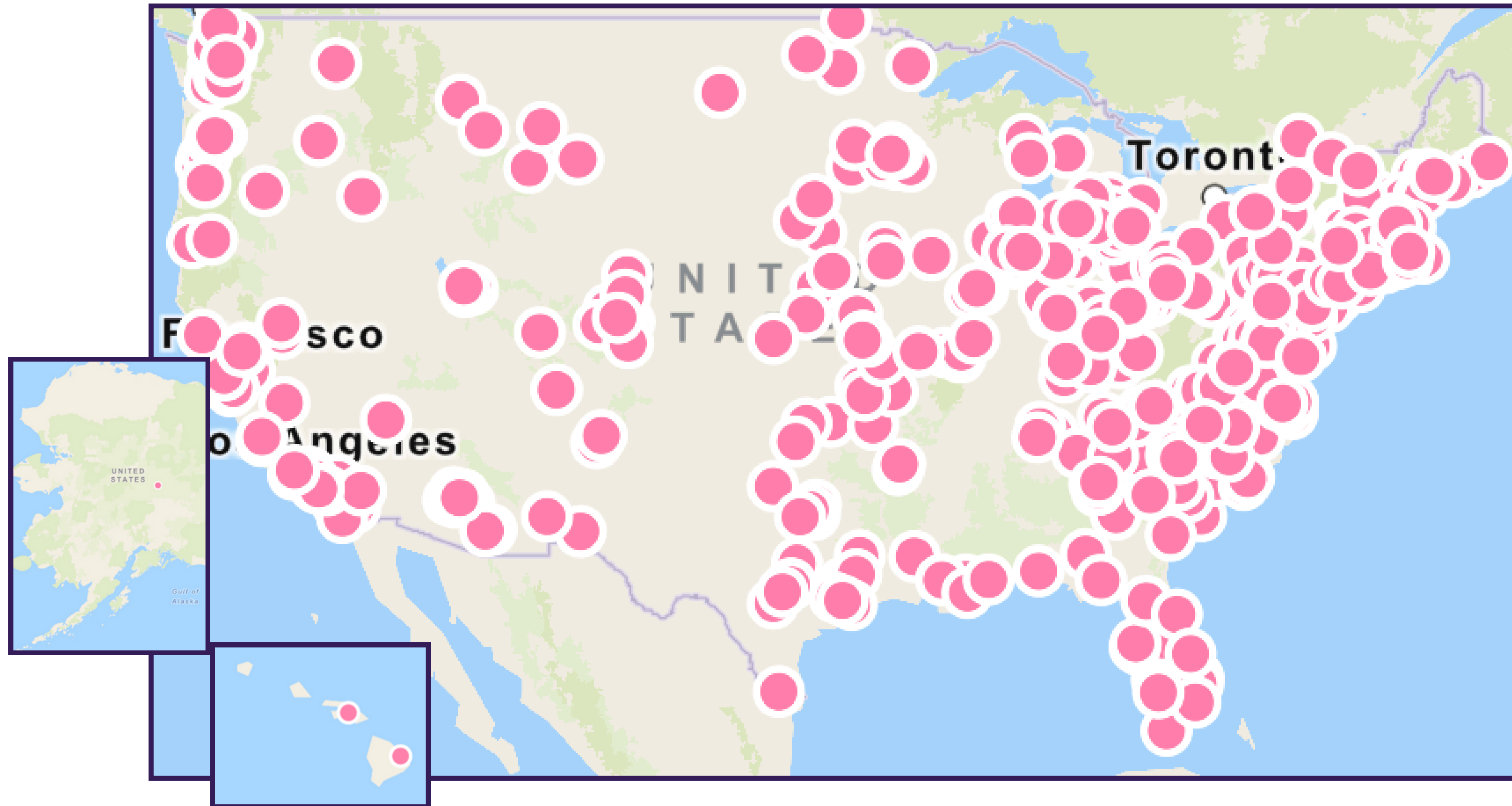


RWB's national grassroots organizing program

We help new local groups across the country get started and existing groups grow and strengthen.

Groups stay independent of Red Wine & Blue, while gaining access to extensive content, training & event opportunities, and connection to other leaders of grassroots groups from across the country.

TROUBLENATION TODAY



**LAUNCHED
FALL 2023**

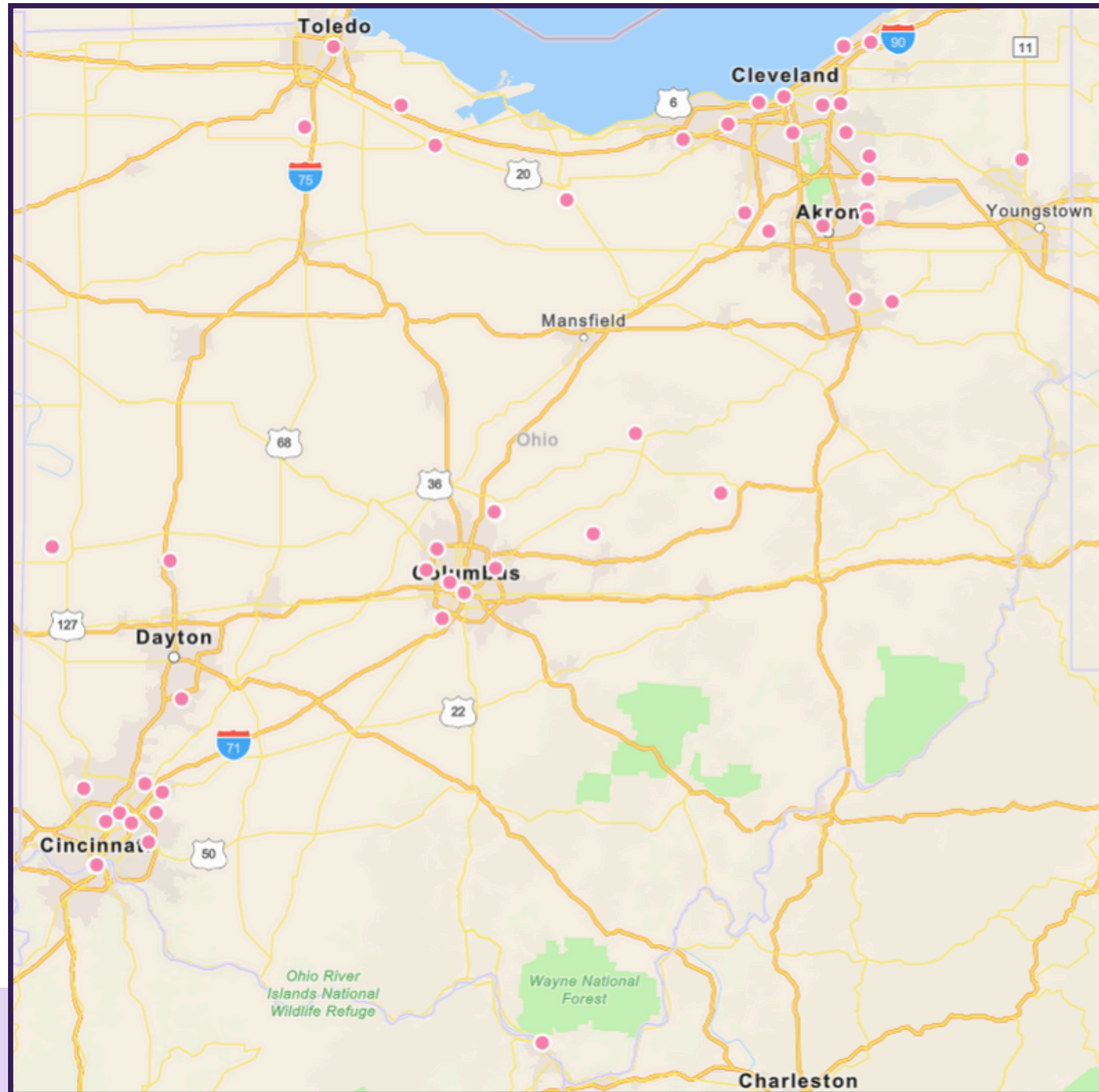
**835+
GRASSROOTS
GROUPS**

50 STATES+

**100,000+
MEMBERS**

TROUBLENATION IN OHIO

**DO YOU
SEE YOUR
GROUP?**



**61
GRASSROOTS
GROUPS**

**16,000+
MEMBERS**

**174 EVENTS
IN FIRST SIX
MONTHS
2025**

TROUBLENATION IN OHIO



WHAT DO WE OFFER WITH TROUBLENATION?



TOOLS & SUPPORT



Multi-page
website

NEW
GROUP?
START HERE!

PUBLIC
EVENT
CALENDAR

MEMBER
ONLY
EVENTS

REQUEST
GROUP
SERVICES

LOG IN TO
YOUR
GROUP



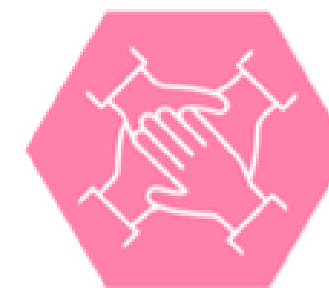
LEADERS' CORNER



LEADER TRAINING



RESOURCE
LIBRARY



ACTIONS



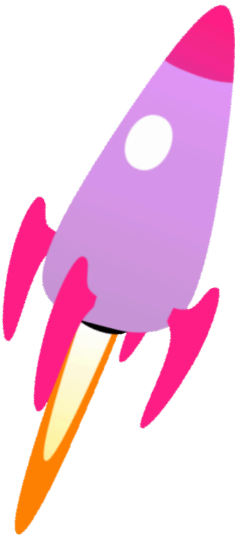
BACK TO MAP



TRAINING, TRAINING... AND MORE TRAINING



LAUNCH
SEQUENCE



PLAYLIST

REPRODUCTIVE RIGHTS

PLAYLIST

TROUBLENATION 101


PLAYLIST

BASICS FOR GROUP LEADERS

HOW WE SUPPORT YOU



Group Services



EMAILS TO PROMOTE GROUP OR EVENT



UPLOAD PHOTOS & VIDEOS



CUSTOMIZED GROUP LOGO



BE OUR SPOTLIGHT GROUP

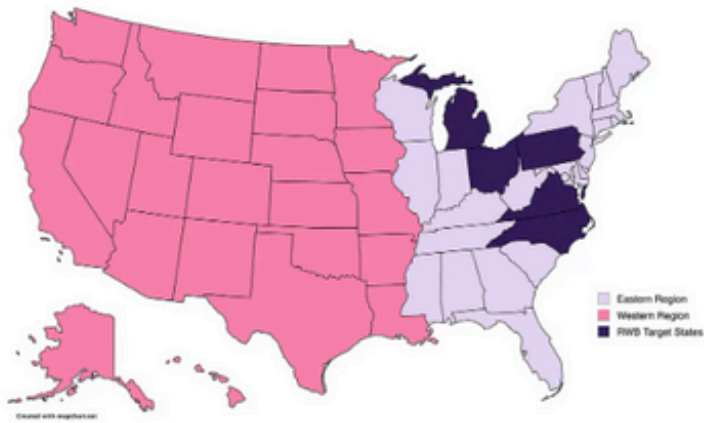


|| MEETINGS

Biweekly Newsletter



TroubleNation Team



ERIN
Western Region



SHANNON
Eastern Region



ANGELA
North Carolina and
Pennsylvania



KELSEY
Virginia



MISSY
Ohio



RENEE
Michigan



LET'S TAKE A LOOK!

TroubleNATION
BY RED WINE & BLUE

THE REALITY OF PROJECT 2025 CREATE A LOCAL GROUP TROUBLENATION RESOURCES PAGE

EVENTS **LOCAL GROUPS**

Show advanced filters

Walled Lake SB Love Squad
75 Members
Our local group will connect women in our community who want to work with others who share their ...
Join

Rochester Parents RISE
(Respectful, Inclusive, Supportive...)
12 Members

The map displays the continental United States, southern Canada, and northern Mexico. Numerous red dots are scattered across the landmasses, representing the locations of local groups. There is a high concentration of dots in the eastern half of the United States, particularly in the Northeast and Midwest. Dots are also present in the western United States, including California and the Pacific Northwest. A few dots are visible in southern Canada and northern Mexico. The map includes geographical labels: 'Gulf of Alaska', 'Hudson Bay', 'Davis Strait', 'North Pacific Ocean', and 'North Atlantic Ocean'. Country and state labels include 'CANADA', 'UNITED STATES', and 'MEXICO'. City labels include 'Vancouver', 'San Francisco', 'Los Angeles', and 'Toronto'.

QUESTIONS?



Email us: troublenation@redwine.blue



EXPLORE AND ENGAGE:

160 WAYS TO CHANGE THE WORLD

WITHOUT LOSING YOUR SH*T



GUIDE FOCUS AREAS



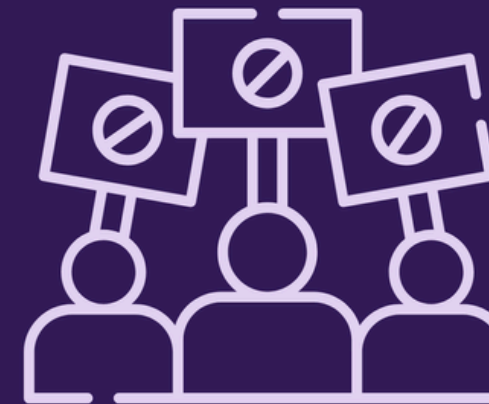
BUILDING YOUR COMMUNITY



TAKING BACK POWER: ELECTIONS & ADVOCACY



SHOWING UP: PROTESTS, BOYCOTTS, & BEYOND



CARING FOR EACH OTHER: MUTUAL AID & PROTECTION



THE SECRET TO EFFECTIVE MESSAGING



BUILDING YOUR COMMUNITY

- Connection, belonging, collective power
- Taking action in your community
- Starting, sustaining, or growing your group



- ★ Start a TroubleNation group
- ★ Host a PowerPoint Vision party
- ★ Participate in community service
- ★ Learn about past community building
- ★ Hold an “Unhappy Happy Hour”

TAKING BACK POWER



- Working to elect commonsense leaders
- Advocating for laws/policies you want
- Getting involved on a local level



- ★ Embracing Rally to do relational outreach
- ★ Learn about races, candidates, ballot initiatives
- ★ Learn how to power map
- ★ Create legislative flash cards
- ★ Create and circulate a local petition

SHOWING UP



- Showing folks that they are not alone
- Visibly opposing in both big and small ways
- Sending a message that we will not be silent



- ★ Learn about joy as an act of resistance
- ★ Make and share lists of businesses
- ★ Use the Red Wine & Blue Parent Playbook
- ★ Engage in craftivism
- ★ Contact businesses that dropped diversity programs

CARING FOR EACH OTHER

- Coming together to meet community's needs
- Supporting those being marginalized/targeted
- Being in solidarity with others when they need it most



Red Wine & Blue

- ★ Learn about mutual aid from the past
- ★ Build a community resource list to share
- ★ Fundraise to support those in need
- ★ Send cards to groups/people under attack
- ★ Spread the word on how to get reproductive healthcare

*Trouble***NATION**
BY RED WINE & BLUE

USING THE GUIDE



- Explore each of the four action sections in detail
 - Pay particular attention to **Taking Back Power: Elections & Advocacy**
- Choose 1-2 actions from the any sections for your group to tackle in the short-term
- Identify a long-term action that could be a stretch goal for your group
- Use the guide as a resource to help plan meetups, activities and events for the year



<https://redwine.blue/change-the-world-guide/>

RWB SUMMER OF ACTION

- Snap a pic or video of how you're making some good trouble this week and share it using **#RWBSummerOfAction**
- Red Wine & Blue will share some of their favorites on their social channels!

Summer
of ACTION ✓



#RWBSummerOfAction

Trouble **NATION**
BY RED WINE & BLUE

*Trouble***NATION**

BY RED WINE & BLUE

Would you like to start a group?
Have a group but have questions?
Let's talk today!



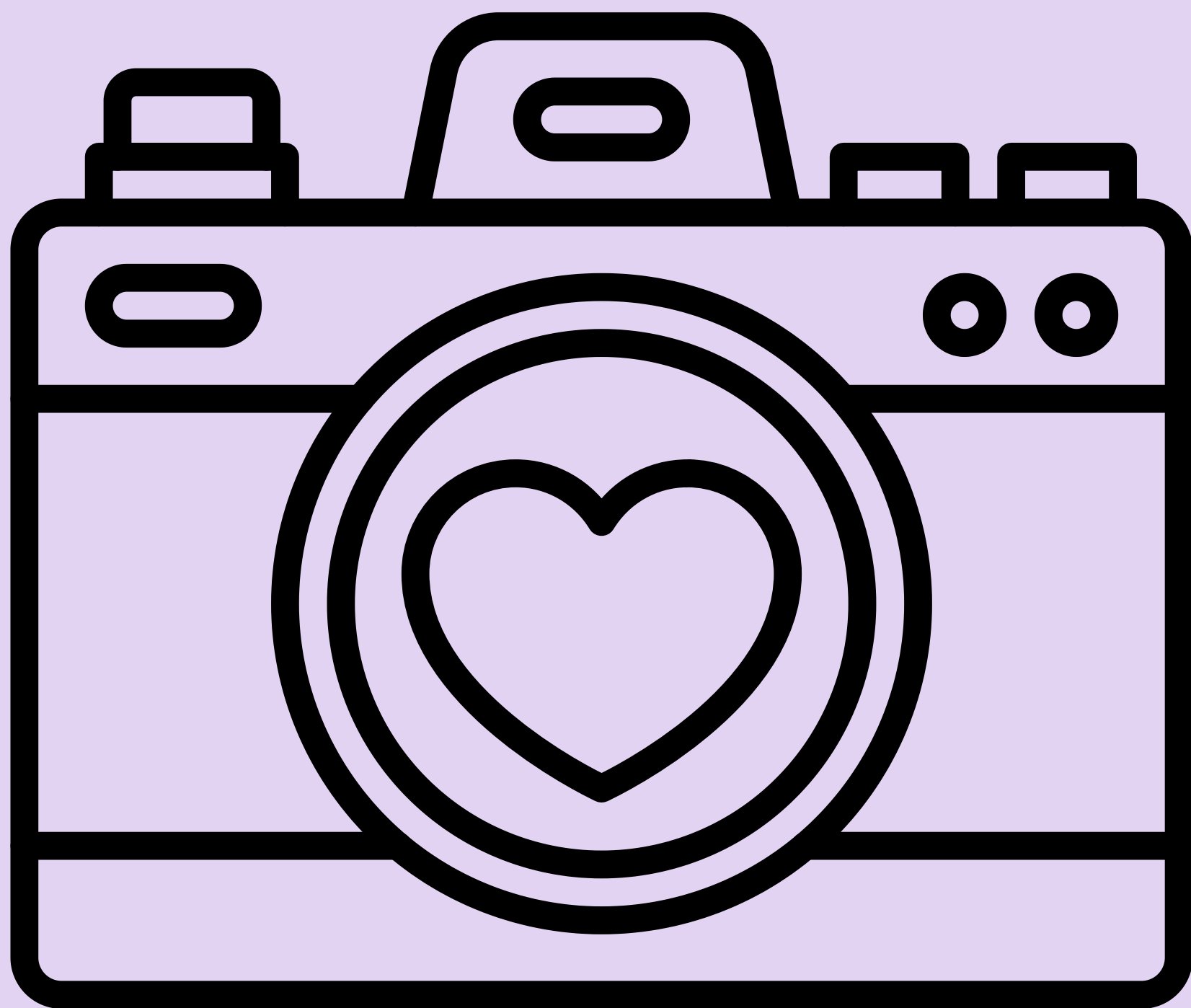
AGENDA

- 10:00** Welcome, Introductions
- 11:00** Group Picture
- 11:20** Strategy & Priorities
- Noon** RWB App and Rally!
- 12:30** Lunch with New Friends
- 1:20** Partner Panel
- 2:20** Break
- 2:30** How to Capture It All
- 3:00** TroubleNation Resources & Their Plans
- 3:45** Commitment, Wrap Up and Closing

WE NEED YOUR
COMMITMENT

WE NEED YOUR **COMMITMENT**

- Get your group in the RWB app
- Teach others to use Rally
- Talk to friends about issues
- Record their impact in Rally
- Host a get-together - house party, craftivism event, etc
- Bring RWB into events you are participating in
- Share information on social media
- Talk to your community about issues that impact them



TROUBLE

Shuffle

LIVE

OHIO EDITION